



GMT MONTHLY MEMBERSHIP PROGRESS REPORT

Results as of: 3/31/2024

Multiple District 2

LOCATION: TEXAS

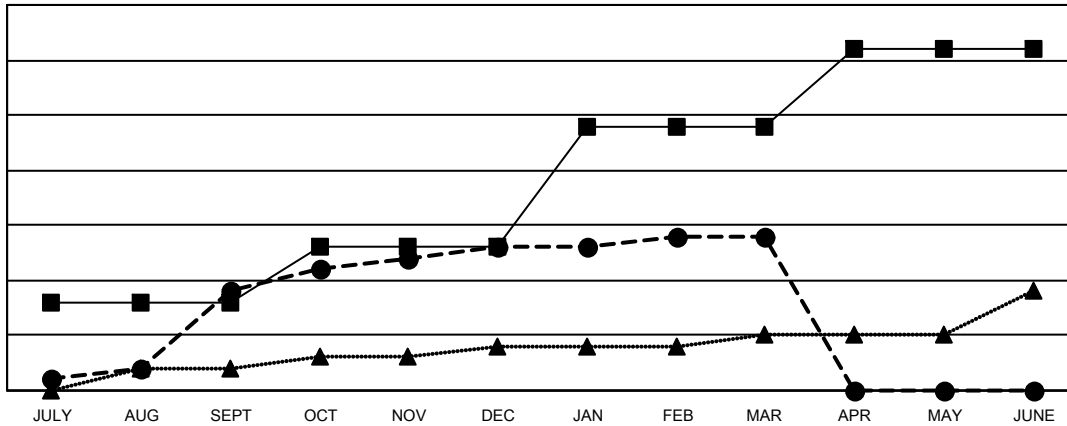
GMT: OPEN

GMT CA 1

Clubs			
RESULTS FOR 2023-2024			
QUARTER	NEW CLUB GOAL	NEW CLUBS	DROPPED CLUBS
JULY/AUG/SEPT	8	9	8
OCT/NOV/DEC	5	4	7
JAN/FEB/MAR	11	1	3
APR/MAY/JUNE	7	0	0

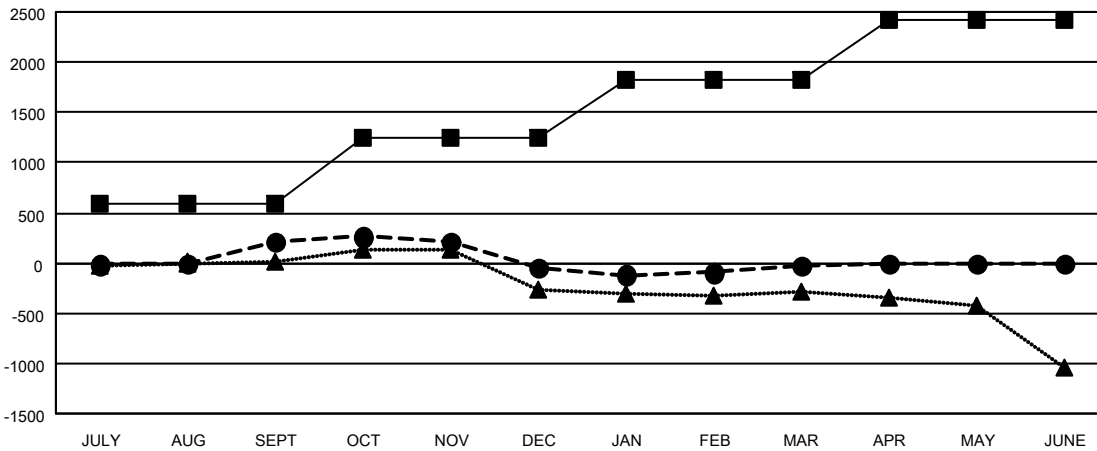
Members			
RESULTS FOR 2023-2024			
QUARTER	MEMBER GROWTH NET GOAL	MEMBER GROWTH ACTUAL	DROPPED MEMBERS ACTUAL (including transfers)
JULY/AUG/SEPT	591	1,149	818
OCT/NOV/DEC	661	741	938
JAN/FEB/MAR	572	811	746
APR/MAY/JUNE	592	0	0

GOALS AND ACTUAL NEW CLUBS CUMULATIVE



- - CURRENT YEAR GOALS FOR NEW CLUBS
- - CURRENT YEAR ACTUAL NEW CLUBS
- ▲ - LAST YEAR ACTUAL NEW CLUBS

GOALS AND ACTUAL MEMBERS CUMULATIVE



- - MEMBER GROWTH NET GOAL
- - MEMBER GROWTH ACTUAL
- ▲ - LAST YEAR MEMBERSHIP ACTUAL

DROPPED CLUBS: 18	456 CLUBS OF 767 ADDED 1 OR MORE NEW MEMBERS	GENDER DISTRIBUTION MALE 13,202 (60.47%) FEMALE 8,632 (39.53%)
DROPPED MEMBERS DECEASED 212 CLUB CANCELLED 62 OTHER 2,227 TOTAL 2,501	CLICK HERE FOR CUMULATIVE MEMBERSHIP DATA	TOTAL FAMILY UNIT MEMBERS 3,431 FAMILY MEMBERS PAYING HALF DUES 1,755